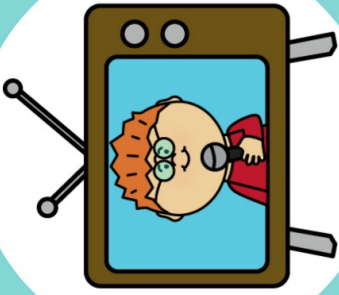


Screen

Time

30
Minutes

30
Minutes



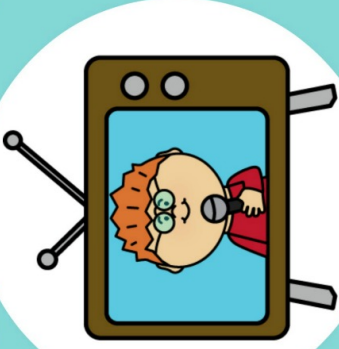
Ticket

Screen

Time

30
Minutes

30
Minutes



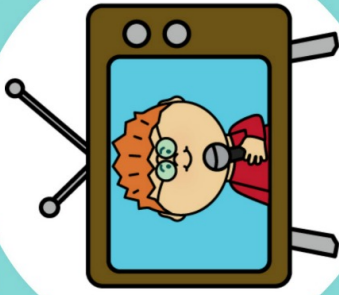
Ticket

Screen

Time

30
Minutes

30
Minutes



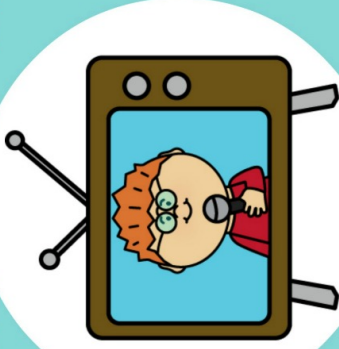
Ticket

Screen

Time

30
Minutes

30
Minutes



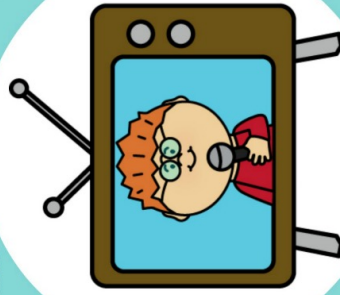
Ticket

Screen

Time

30
Minutes

30
Minutes



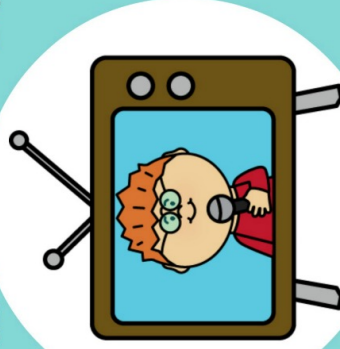
Ticket

Screen

Time

30
Minutes

30
Minutes



Ticket